

FICHE TECHNIQUE



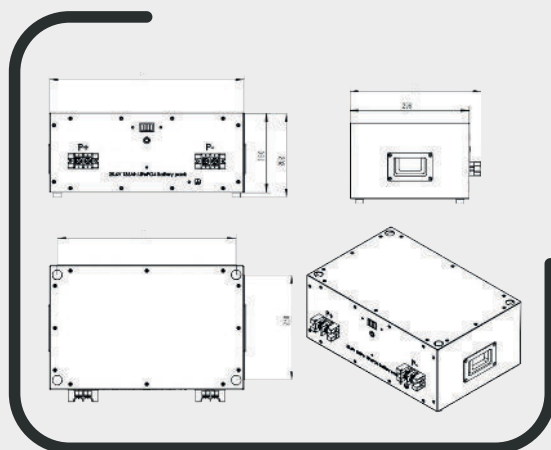
25.6V

135Ah

3.5kw

5 ans

LiFePO4 Datasheet



3.2V135Ah



Recyclable



Waterproof



Smart BMS



Long Life



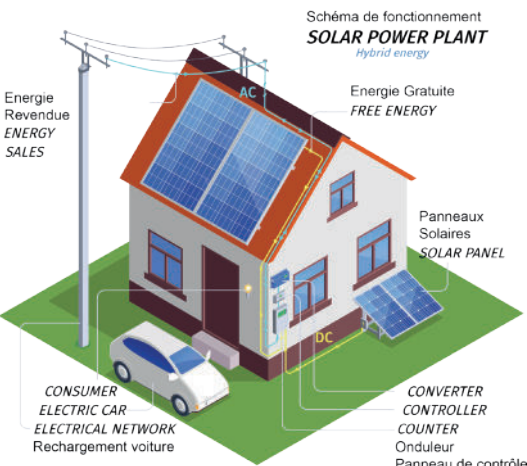
Charge/Discharge Protection



Over-heat Protection

CELLULE / CELL FEATURES

Tension nominale <i>Nominal voltage</i>	3.2V
Capacité nominale <i>Nominal capacity</i>	135Ah
Poids <i>Weight</i>	2.7KG
Dimension <i>Dimension</i>	173*43*172mm
Résistance interne <i>Internal resistance (1KHz)</i>	≤0.33mΩ
Décharge mensuelle <i>Monthly self discharge</i>	≤3.5%
Température de stockage <i>Storage temperature</i>	0°C ~ 35°C dry



SPECIFICATION BATTERIE / BATTERY SPECIFICATIONS

Tension nominale <i>Nominal voltage</i>	25.6V
Capacité nominale <i>Nominal capacity</i>	135Ah @0.5C discharge current 25±2 C
Evaluation capacité <i>Rated Capacity</i>	130-138Ah @0.5C discharge current 25±2 C 20.8V - 28.2V
Puissance nominale <i>Nominal Power</i>	3.45KWh
Dimension <i>Dimension</i>	460*300*190mm
Poids <i>Weight</i>	36KG
Tension de coupure en décharge <i>Discharge Cut-off Voltage</i>	≥20.8V
Recommandation de coupure de décharge <i>Recommend Discharge Cut-off Volt</i>	23.2V
Tension de charge <i>Charge Voltage</i>	≤28.2V
Recommandation de la tension de charge <i>Recommend Charge Voltage</i>	27.6V
Tension de charge flottante <i>Floating charge voltage</i>	26.8V
Courant de charge/décharge en continu <i>Continuously Charge/Discharge Current</i>	100A @25±2 C
Courant de charge/décharge standard <i>Standard charge/discharge Current</i>	50A @25±2 C
Configuration <i>Configuration</i>	1P8S
Température de fonctionnement <i>Working Temperature</i>	0~50°C (Charge) -10~50°C (Discharge) -30~45°C (Storage)
Cycle <i>Cycle life</i>	≥80% capacity state after 4000 cycles at 0.5C, 25 C, 100% DOD
Niveau IP <i>IP level</i>	IP54