

FICHE TECHNIQUE



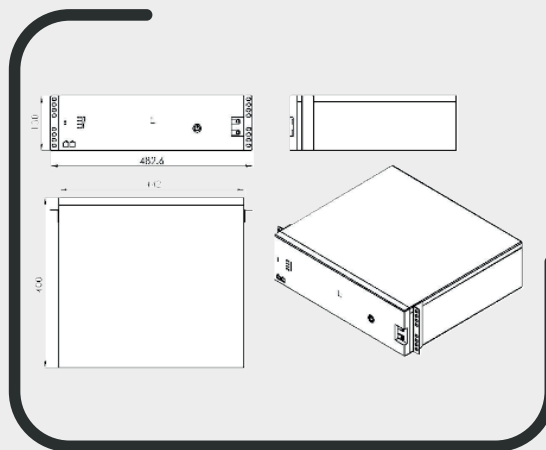
51.2V

280Ah

14.3kw

5 ans

LiFePO4 Datasheet



Recyclable



Waterproof



Smart BMS



Long Life



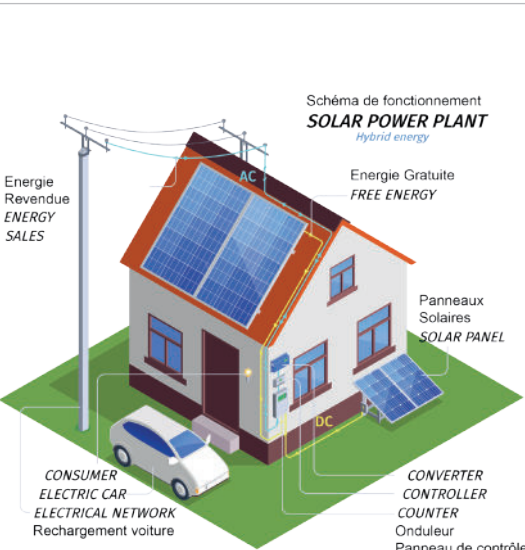
Charge/Discharge Protection



Over-heat Protection

CELLULE / CELL FEATURES

Tension nominale Nominal voltage	3.2V
Capacité nominale Nominal capacity	280Ah
Poids Weight	5.22KG
Dimension Dimension	174*72*205mm
Résistance interne Internal resistance (1KHz)	≤0.3mΩ
Décharge mensuelle Monthly self discharge	≤3.5%
Température de stockage Storage temperature	0°C ~ 35°C dry



SPECIFICATION BATTERIE / BATTERY SPECIFICATIONS

Tension nominale Nominal voltage	51.2V
Capacité nominale Nominal capacity	280Ah @0.5C discharge current 25±2 C
Puissance nominale Nominal Power	14.3KWh
Dimension Dimension	440*750*251mm
Poids Weight	112KG
Tension de coupure en décharge Discharge Cut-off Voltage	≥41.6V
Tension de charge Charge Voltage	≤57.6V
Courant de charge/décharge standard Standard charge/discharge Current	140A @25±2 C (Recommended)
Courant de charge/décharge standard max Max Standard charge/discharge Current	200A @25±2 C
Recommandation de la tension de charge Recommend Charge Voltage	57.6V
Interface de communication Communication Interface	CAN or RS48
Gamme SOC SOC Range	5-100%
Gamme SOC recommandée Recommended SOC Range	15-95%
Configuration Configuration	1P16S
Température de fonctionnement Working Temperature	0~ 50°C (Charge) -10~ 50°C (Discharge) -30~ 45°C (Storage)
Cycle Cycle life	≥80% capacity state after 4000 cycles at 0.5C, 25 C, 100% DOD
Niveau IP IP level	IP54